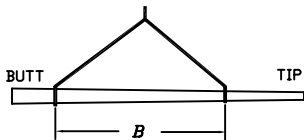


IMPORTANT! PLEASE READ BEFORE HANDLING THE POLES

- 1) Prior to unloading, inspect general condition of poles to be sure no obvious damage has occurred during shipping
- 2) Use the sketches shown below as a guide for unloading the poles. Be sure that crane straps are in good condition
- 3) Always use experienced crane operators following all safety rules
- 4) When storing poles, it is crucial that the pole is blocked up in a level position so it does not bend under its own weight (see below)
- 5) When installing, raise pole as smoothly as possible referring to the sketches below.
- 6) Call one of our toll free numbers listed below if there are any questions or concerns

HANDLING INSTRUCTIONS FOR POLES SHORTER THAN 80'

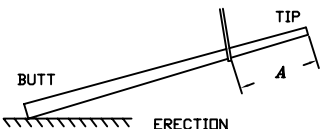
HANDLING INSTRUCTIONS FOR POLES 80' AND LONGER



HANDLING AND UNLOADING



POLE STORAGE

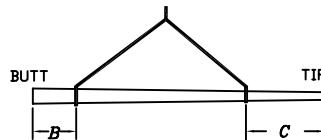


ERECTION

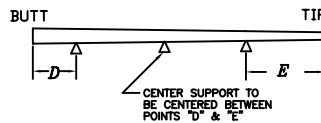
	POLE LENGTH UP TO 50'	POLE LENGTH BETWEEN 50' & 80'
*	A LOCATE ABOVE POINT OF BALANCE	20% OF DISTANCE FROM POLE TIP
***	B RECOMMENDED MINIMUM 10'	MIN. 20% & UP TO 50% POLE LENGTH
**	C 10% OF POLE LENGTH	15% OF POLE LENGTH
**	D 25% OF POLE LENGTH	30% OF POLE LENGTH

- * WHEN HEAVY HARDWARE IS BEING ERECTED ON POLE, CONTACT MANUFACTURER FOR LOCATION OF TOP PICK-UP POINT OR REFER TO APPROVAL DRAWING FOR FACTORY INSTALLED PICK UP HOLE.
- ** WHEN STORING FOR ANY LENGTH OF TIME, POLES MUST BE SUPPORTED SO THAT THEY ARE NOT BENT UNDER THEIR OWN WEIGHT.
- *** IDEALLY, A SPREAD OF 50% OF POLE LENGTH IS BEST FOR UNLOADING POLES OVER 50' IN LENGTH.

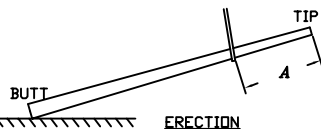
▲ USE WEDGES AT ENDS OF EACH ROW TO KEEP STORAGE BUNK SECURE



HANDLING AND UNLOADING



POLE STORAGE



ERECTION

	80'	85'	90'	95'	100'	105'	110'
*	A 25'	25'	25'	30'	30'	30'	35'
**	B 15'	15'	20'	25'	25'	25'	25'
**	C 25'	25'	25'	30'	30'	30'	30'
**	D 10'	10'	10'	10'	15'	15'	15'
**	E 10'	15'	15'	15'	15'	15'	15'

- * WHEN HEAVY HARDWARE IS BEING ERECTED ON POLE, CONTACT MANUFACTURER FOR LOCATION OF TOP PICK-UP POINT OR REFER TO APPROVAL DRAWING FOR FACTORY INSTALLED PICK UP HOLE.
- ** WHEN STORING FOR ANY LENGTH OF TIME, POLES MUST BE SUPPORTED SO THAT THEY ARE NOT BENT UNDER THEIR OWN WEIGHT.

▲ USE WEDGES AT ENDS OF EACH ROW TO KEEP STORAGE BUNK SECURE



840 Walkers Line
Burlington, Ontario L7R 3X9
Phone 1-800-268-7809

9200 Energy Lane
Northport, Alabama 35476
Phone 1-800-435-6563

14503 Wallick Road
Atchison, Kansas 66002
Phone 1-800-837-1024